

# TRANSFORMING INSTITUTIONS INTO INNOVATION-DRIVEN CAMPUSES

“Not just education. Execution.”

Website :  
[www.promovecyc.com](http://www.promovecyc.com)

Recognized By



Powered By



Aligned with



## **INTRODUCTION TO PROMOVE**

**ProMove – Craft Your Career** is a pioneering National Innovation Infrastructure Platform designed to integrate innovation, startup development, and business creation into a single, unified ecosystem.

**Built to redefine how institutions approach education, ProMove bridges the long-standing gap between learning and real-world execution by enabling students to move seamlessly through the journey of:**

**LEARNING → BUILDING → SOLVING**

**ProMove is not just a platform—it is a complete innovation ecosystem that empowers institutions to transform into centers of creation, experimentation, and problem-solving.**

### **POWERED BY PROMOVE CLOUD – WORLD'S FIRST INTEGRATED INNOVATION ECOSYSTEM PLATFORM**

*ProMove is powered by its proprietary technology backbone – the ProMove Cloud, the world's first integrated innovation ecosystem platform designed to unify institutions, students, and mentors into a single, collaborative environment.*

***At its core, the ProMove Cloud transforms innovation from a concept into a measurable, trackable, and scalable journey.***

# What the ProMove Cloud Enables ;

## Innovation Score System

Tracks every student's **creativity, participation, and problem-solving**—giving institutions measurable growth beyond marks.

## Penny Investment Model

Enables micro-investments in student ideas, where even working professionals can become **Penny Investors** and **support innovation**.

## Unified Ecosystem Platform

Connects **Institutions, Students, Mentors, and Experts** in one integrated system for seamless collaboration.

## Structured Innovation Frameworks

Guides students from **problem identification to solution execution** through a clear, step-by-step process.

## Real-Time Analytics & Reports

Tracks engagement, ideas, and performance with downloadable reports for **NAAC, AICTE**, and **accreditation** needs.

Traditional education measures marks. **ProMove measures innovation, execution, and impact.**

And now, any working professional can become a **Penny Investor**—contributing to the next generation of ideas.

**OUTCOME :** A connected innovation ecosystem where learning turns into execution—delivering measurable, reportable, and accreditation-ready impact for institutions.

“ Powered by Strong Institutional Backing ”

## IMPLEMENTATION PARTNER

This initiative is implemented in collaboration with:

**Atal Incubation Centre – Sri Krishnadevaraya University**

AIC-SKU is a recognized incubation center supporting innovation, entrepreneurship, and startup ecosystems in India.



**Atal Incubation Centres are part of India's national mission to build a strong INNOVATION ECONOMY**

### Why This Matters :

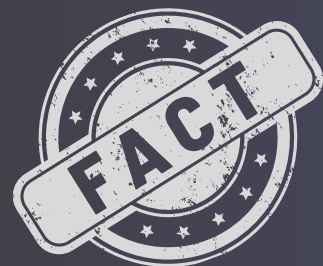
- Adds **credibility** and **trust**
- Ensures **structured implementation**
- Brings **ecosystem-level** exposure to **institutions**

# "Instant Incubation Installation (III)"

## INTRODUCTION TO III (PRODUCT)

**III is not a lab. Not a course. Not a workshop.**

It is a complete **Innovation Operating System** installed inside your institution.



Institutions implementing structured innovation systems see up to **3X higher student engagement**

### What is III?

III is a **plug-and-play innovation system** that transforms classrooms into execution-driven environments through structured activities, engagement models, and performance tracking.

#### **Core Objective:**

To build a culture of **innovation, creativity, and problem-solving** among students without requiring additional infrastructure.

### Key Highlights :

- **No physical lab required**
- **Ready-to-deploy system**
- **Activity-based engagement**
- **Works across all grades (6th – College)**
- **Fully aligned with NEP & skill-based learning**

# "From Passive Learning to Active Creation"

## ACTIVITIES UNDER III

III delivers a **structured innovation activity system** that transforms classrooms into **execution-driven environments** with continuous student engagement.

**Problem Identification**  
*Real-world problem discovery*

**Idea Generation**  
*Converting problems into solutions*

**Innovation Challenges**  
*Hands-on execution activities*

**Pitch Sessions**  
*Building confidence & communication*

**Innovation Exhibitions**  
*Showcasing ideas & gaining recognition*

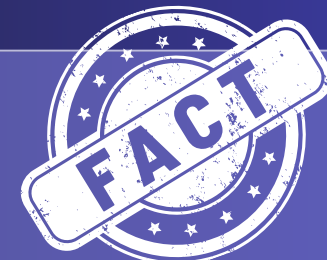
**Teacher Training**  
*Faculty equipped to drive innovation*

**Innovation Council**  
*Internal leadership & management system*

**Tracking System**  
*Monitoring participation, skills, and growth*

### Outcome

A strong innovation culture with improved **student engagement, creativity, and execution ability.**



- III enables institutions to achieve:
- **National-level recognition**
  - **At least one patent-level innovation outcome**
- This is not just activity—it's structured, measurable innovation.**

# "Outcomes That Actually Matter" - From Campus Activities to National-Level Recognition



## Institution-Level Impact

- *Recognized Innovation Ecosystem established on campus*
- *NAAC / AICTE-ready documentation & innovation reports*
- *Trained faculty + active Innovation Council*
- *Positioned as an Innovation-Ready Institution*
- *Significant boost in student participation & engagement*



## National Visibility & PR Outcomes

- *Guaranteed national media publication & startup forum features*
- *5X annual media presence via PR & social platforms*
- *Nominations for national innovation & startup awards*
- *Access to startup founders, innovators & industry leaders*



## Innovation & Student Outcomes

- *100+ real-world problems identified → 50+ innovative ideas*
- *Regular pitch sessions, demo days & showcases*
- *Direct access to mentors, investors via ProMove Cloud*
- *Individual innovation scores & growth tracking*
- *Minimum one IPR / patent-level idea developed*
- *Participation in national hackathons & innovation challenges*



## Branding & Recognition

- *ProMove Verified Institution Badge & Innovation-Ready Certification*
- *Digital + Physical Wall of Fame for top innovators*
- *Viral content — from campus to national platforms*
- *Access to prize money, grants & funding pathways*
- *Full transformation into a nationally recognized, innovation-driven campus*

**"We don't just run activities. We deliver measurable outcomes."**

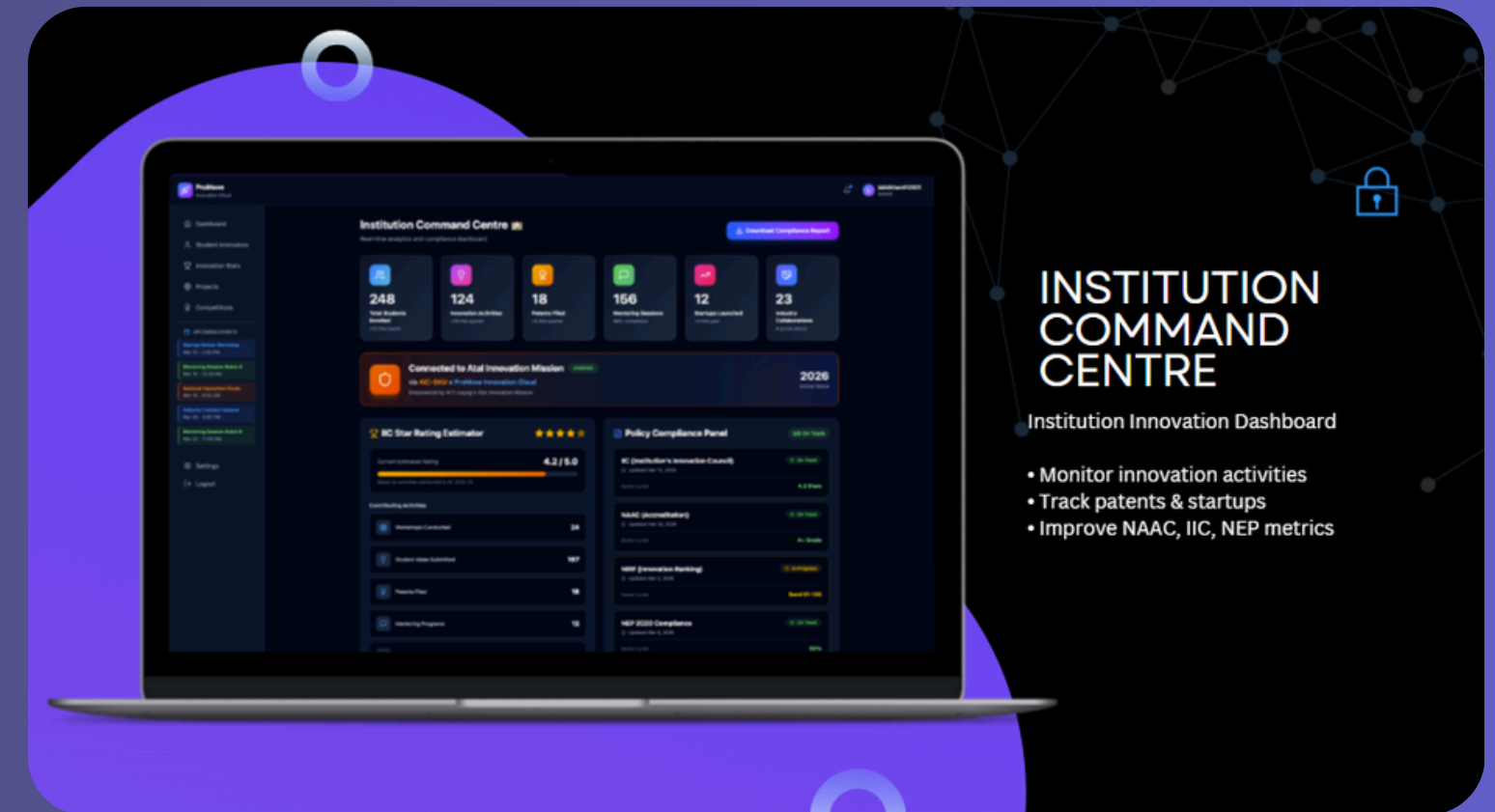
# PROMOTE CLOUD ACCESS

## Core Capabilities

- **Innovation Score System** – Tracks performance beyond academics
- **Innovation Profiles – Idea** → Execution journey in one place
- **Live Ecosystem Connectivity** – Students, mentors & investors connected
- **Real-Time Collaboration** – Instant feedback, mentorship & opportunities
- **Analytics & Dashboards** – Track participation & innovation growth
- **NAAC / AICTE Reports** – Downloadable, compliance-ready data

## What This Means

- Instant access to mentorship, validation & funding
- Builds a live innovation ecosystem within campus
- Enables continuous engagement (not one-time events)
- Ensures data-driven tracking & institutional recognition



**"Where Innovation Meets  
Real-Time Execution"**

**Real-Time Collaboration | Live Ecosystem | Data-Driven Innovation**

# PROMOVE CLOUD OUTCOMES



## Institutional Outcomes

- *Among the first Innovation Cloud-enabled institutions in India*
- *NAAC / AICTE-ready innovation data & reports*
- *Real-time tracking of student engagement & performance*
- *Recognized as a ProMove Verified Innovation Institution*



## Student Outcomes

- *Innovation Score (Innovation Credibility Index)*
- *Digital Innovation Profile (ideas, projects, achievements)*
- *Direct access to mentors, investors & opportunities*
- *Early validation through micro / penny investment exposure*

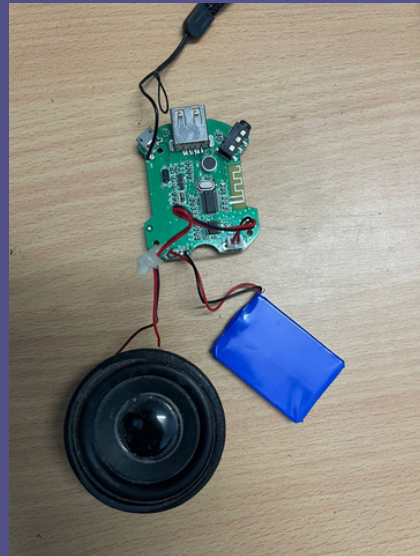
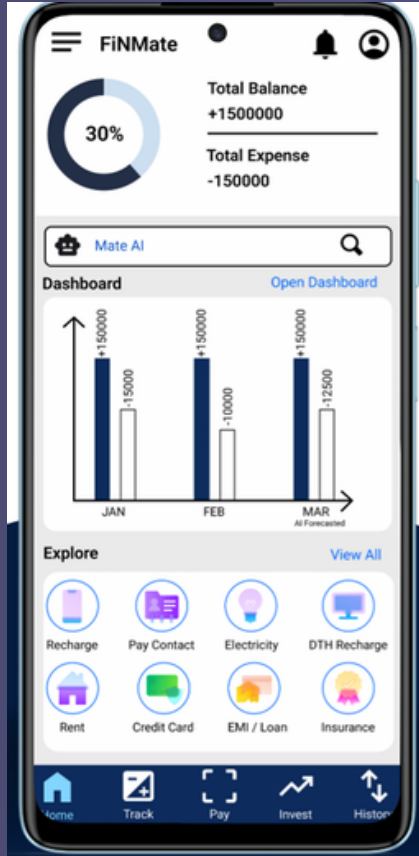
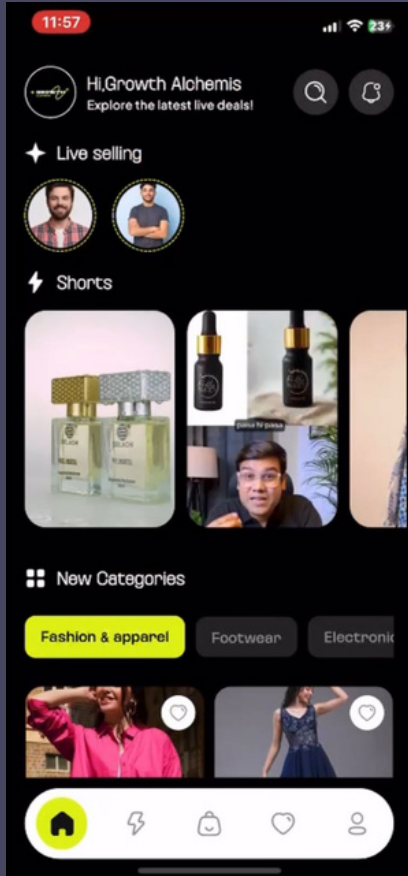
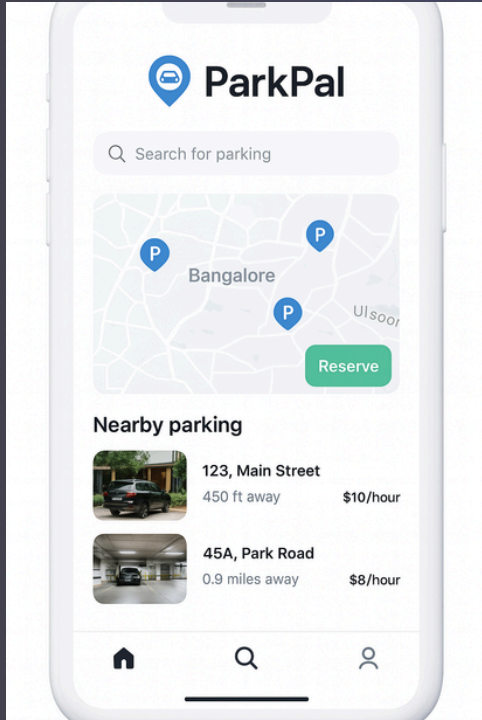


## Ecosystem Advantage

- *Real-time collaboration (no delays, instant connections)*
- *Continuous tracking, validation & growth measurement*
- *A live, evolving innovation system (not static programs)*

**A connected, measurable innovation ecosystem  
where institutions gain recognition and students build real-world credibility.**

# OUR GALLERY



“Real Impact. Real Students. Real Transformation.”

# OUR GALLERY



“Real Impact. Real Students. Real Transformation.”

# OUR GALLERY



"Real Impact. Real Students. Real Transformation."

# THANK YOU

Let's Create Something Amazing Together



+91-6302496990



INFO@PROMOVECYC.COM



@PROMOVE2025



WWW.PROMOVECYC.COM



Igniting Innovation,  
Empowering Entrepreneurs,  
Transforming Futures..